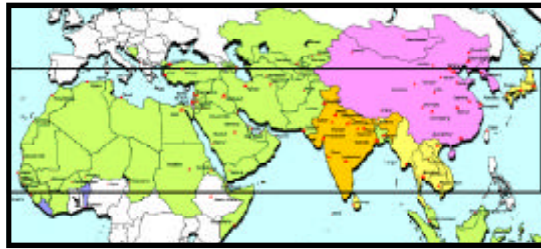


ENCOURAGE YOUR CLASS TO LOOK OUT THE WINDOW



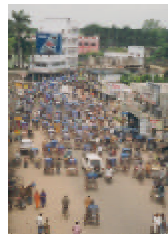
The 10/40 Window is a rectangular shaped area located between 10 degrees and 40 degrees latitude north of the equator. The 10/40 window is home to the world's least reached people groups.

Challenge the members of your small group to look beyond the walls of your classroom to behold people groups still waiting to hear the good news of Jesus Christ for the first time.



4.1 billion of the world's 5.6 billion people live in the 10/40 Window.

97 % of the world's remaining unreached people groups are located in the 10/40 Window.



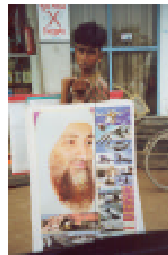
The 10/40 Window contains over 70 % of the world's population but only 8 % of the missionary efforts.

Less than ½ of 1 % of the budget of our churches goes to reach people in the 10/40 Window.



82 % of the poorest of the poor live in the 10/40 Window.

Over 2.4 billion people, 40% of the world's population, live on less than \$1.40 per day in the 10/40 Window.



Most of the people in the 10/40 Window have never met a Christian, seen a Bible, or entered a church.

Most of these people are kept in darkness by hostile cultures, governments, and religions.



Most of the 62 nations in the 10/40 Window are closed to western missionaries.

The top 50 least evangelized cities are all located in the 10/40 Window.

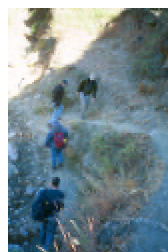


The 10/40 Window is also known as the "resistance belt" and remains the darkest and most inhospitable territory to the cause of Christ and represents the greatest remaining stronghold of Satan.



The seat of every major non-Christian religion is headquartered in the 10/40 Window.

- Islam
- Hinduism
- Atheism
- Buddhism
- Animism
- Sikhism



What will it take to reach those in the 10/40 Window? Paul said, "It has always been my ambition to preach the gospel where Christ was not known, so that I would not be building on someone else's foundation." (Romans 15:20)